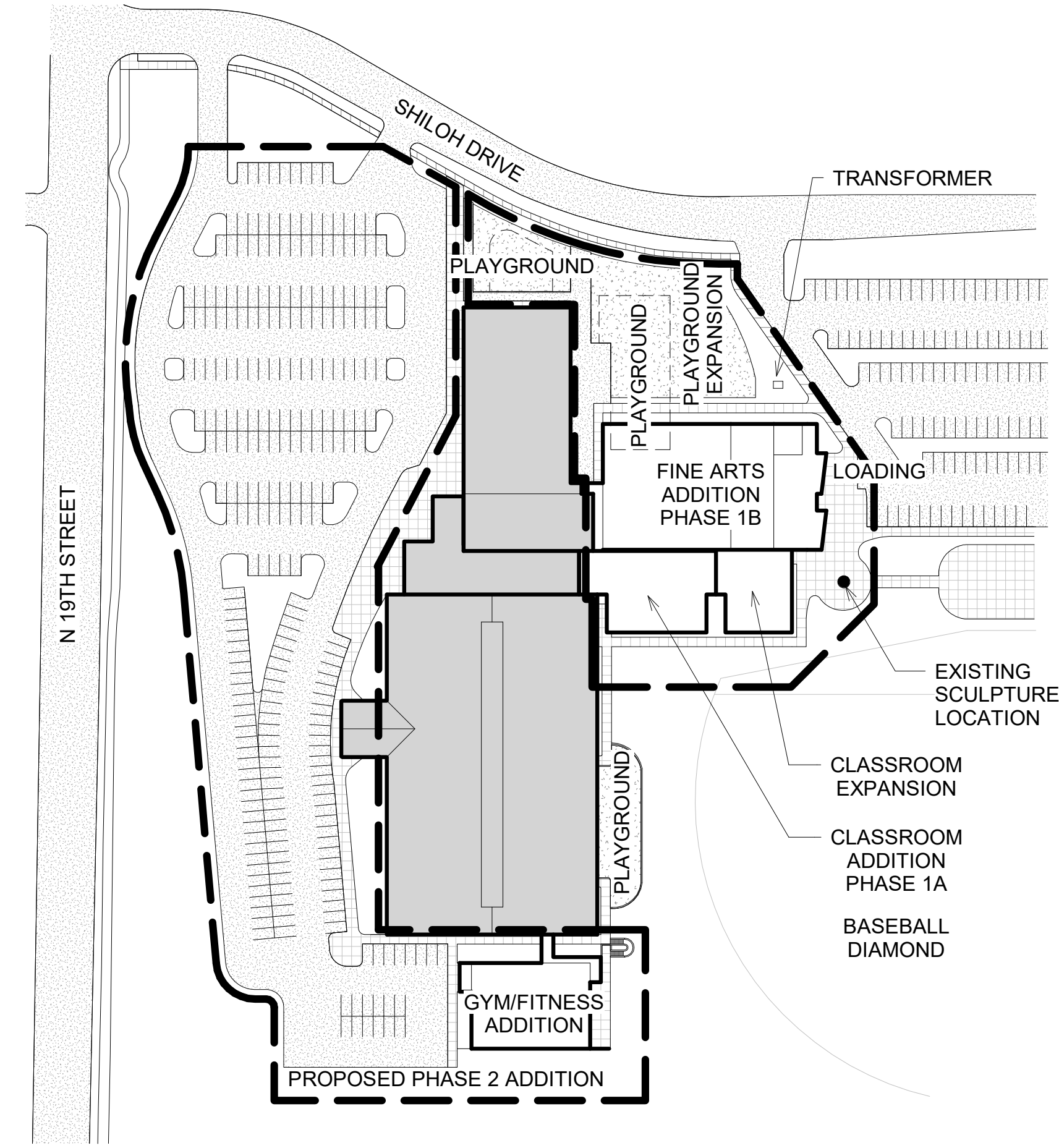
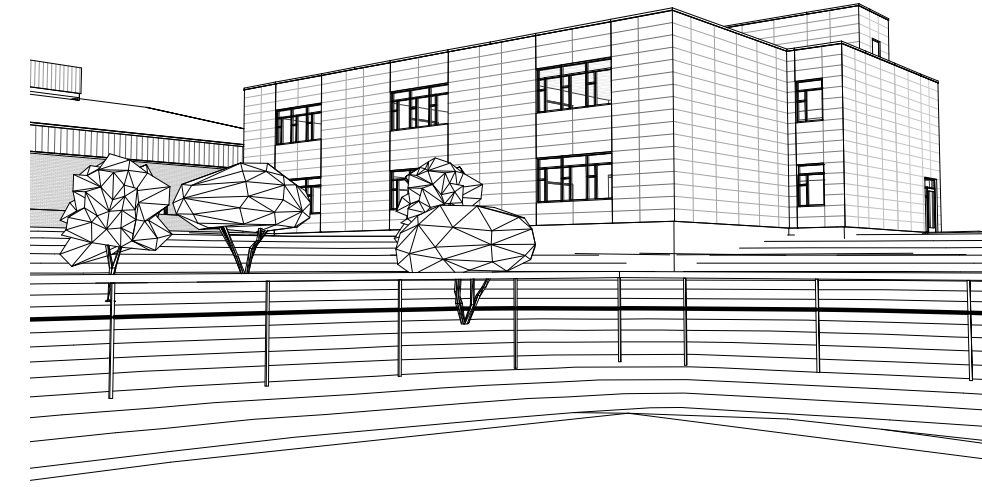


CLASSROOM ADDITION PHASE 1A SHILOH CHRISTIAN SCHOOL

1915 SHILOH DRIVE, BISMARCK, ND 58503

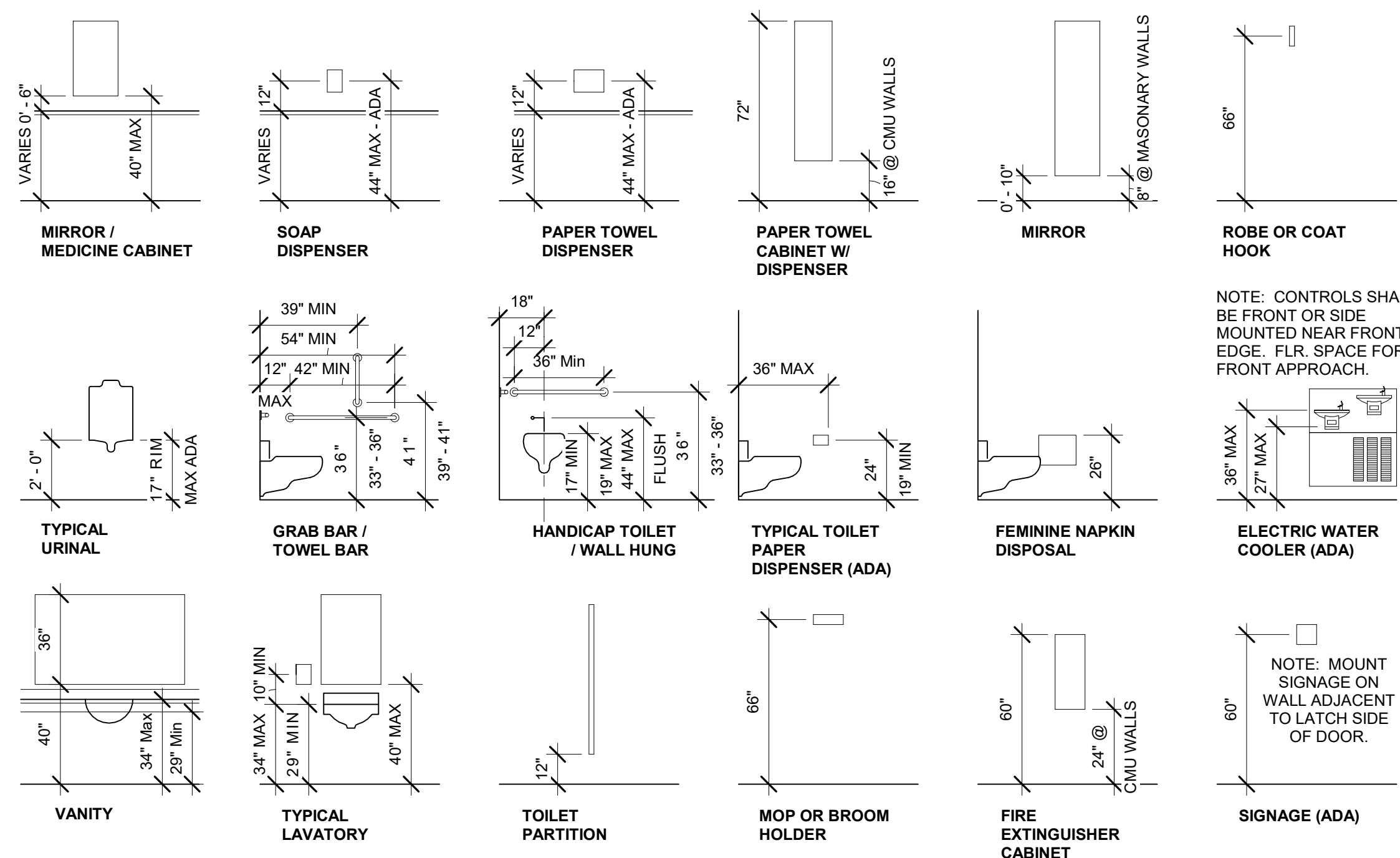


Site Plan
SCALE: 1" = 100'-0"

SHEET INDEX

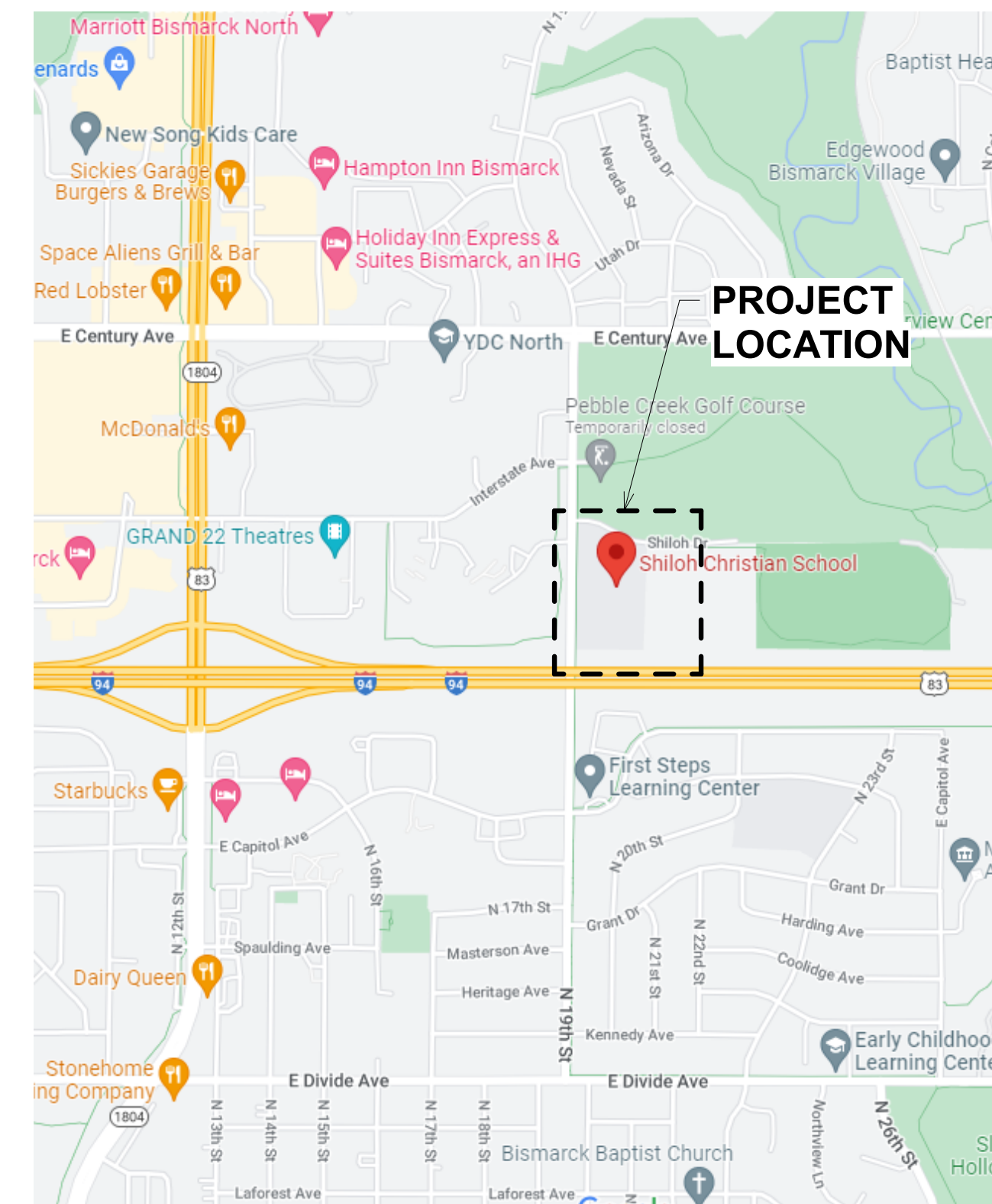
GENERAL	STRUCTURAL (CONTINUED)	PLUMBING (CONTINUED)
G-000 COVER G-101 BUILDING PHASING PLAN GA101 TYPICAL WALL ASSEMBLIES GA110 OVERALL CODE PLAN GA111 GROUND FLOOR CODE PLAN GA112 SECOND STORY CODE PLANS GA113 CLASSROOM ADDITION CODE STUDY	S-602 ROOF FRAMING DETAILS S-701 GENERAL STRUCTURAL NOTES S-702 GENERAL STRUCTURAL NOTES & SPECIAL INSPECTION TABLES	P-401 ENLARGED PLUMBING PLANS P-501 PLUMBING DETAILS P-502 PLUMBING DETAILS P-601 PLUMBING SCHEDULES P-701 PLUMBING RISERS
CIVIL	ARCHITECTURAL	MECHANICAL
C-100 SITE DEMOLITION PLAN C-200 SITE LAYOUT PLAN C-300 SITE DIMENSION PLAN C-400 SITE GRADING PLAN C-500 SITE UTILITY PLAN C-600 EROSION CONTROL PLAN C-700 SITE DETAILS	A-101 GROUND LEVEL FLOOR PLAN A-103 SECOND STORY FLOOR PLAN A-110 GROUND LEVEL RCP A-111 SECOND STORY RCP A-120 ROOF PLAN A-201 ELEVATIONS A-202 ELEVATIONS A-301 SECTIONS A-311 WALL SECTIONS A-312 WALL SECTIONS A-401 ENLARGED PLANS A-501 WALL DETAILS A-601 SCHEDULES AND FRAME ELEVATIONS A-701 INTERIOR ROOM ELEVATIONS	M-101 GROUND LEVEL MECHANICAL HVAC PLAN M-102 SECOND STORY MECHANICAL HVAC PLAN M-103 EQUIPMENT PLATFORM MECHANICAL HVAC PLAN M-104 ROOF MECHANICAL PLAN M-111 GROUND LEVEL MECHANICAL PIPING PLAN M-112 SECOND STORY MECHANICAL PIPING PLAN M-113 EQUIPMENT PLATFORM MECHANICAL PIPING PLAN M-114 EXISTING BUILDING MECHANICAL IMPROVEMENT PLAN M-401 MECHANICAL SECTIONS M-501 MECHANICAL DETAILS M-502 MECHANICAL DETAILS M-601 MECHANICAL SCHEDULES M-602 MECHANICAL SCHEDULES M-701 MECHANICAL CONTROL DIAGRAMS M-702 MECHANICAL CONTROL DIAGRAMS
STRUCTURAL	PLUMBING	ELECTRICAL
S-101 FOUNDATION PLAN PHASE 1A S-201 SECOND FLOOR/LOW ROOF FRAMING PLAN - PHASE 1A S-301 PENTHOUSE ROOF/FLOOR & MAIN ROOF FRAMING PLANS - PHASE 1A S-401 FOUNDATION DETAILS S-402 FOUNDATION DETAILS S-403 FOUNDATION DETAILS S-404 PIER DETAILS S-501 FRAMING DETAILS S-502 FRAMING DETAILS S-505 FRAMING DETAILS S-506 FRAMING DETAILS S-601 ROOF FRAMING DETAILS	MEP000 MEP SYMBOLS & ABBREVIATIONS FP-101 GROUND LEVEL FIRE PROTECTION PLAN FP-102 SECOND STORY FIRE PROTECTION PLAN FP-103 EXISTING BUILDING FIRE PROTECTION IMPROVEMENT PLAN P-101 UNDERFLOOR PLUMBING PLAN P-102 GROUND LEVEL PLUMBING PLAN P-103 SECOND STORY PLUMBING PLAN P-104 EQUIPMENT PLATFORM PLUMBING PLAN P-105 ROOF PLUMBING PLAN P-106 EXISTING BUILDING PLUMBING IMPROVEMENT PLAN	E-100 ELECTRICAL SITE PLAN E-101 GROUND LEVEL LIGHTING PLAN E-102 SECOND STORY & EQUIPMENT PLATFORM LIGHTING PLANS E-111 GROUND LEVEL POWER PLAN E-112 SECOND STORY POWER PLAN E-113 EQUIPMENT PLATFORM POWER PLAN E-501 ELECTRICAL DETAILS E-601 ELECTRICAL SCHEDULES E-602 ELECTRICAL SCHEDULES E-701 ELECTRICAL RISER DIAGRAMS

ADA MOUNTING HEIGHTS



DESIGN TEAM

ARCHITECT BARTLETT & WEST JOSEPH LARRIVEE 3456 EAST CENTURY AVE BISMARCK, ND 58503 701-258-1110	MECHANICAL ENGINEER BARTLETT & WEST MIKE VAN DUYN 3456 EAST CENTURY AVE BISMARCK, ND 58503 701-258-1110
CIVIL ENGINEER BARTLETT & WEST CASEY COLBERN 544 COLUMBIA DR. LAWRENCE, KS 66049 785-330-7044	PLUMBING ENGINEER BARTLETT & WEST MIKE VAN DUYN 3456 EAST CENTURY AVE BISMARCK, ND 58503 701-258-1110
LANDSCAPE ARCHITECT BARTLETT & WEST PAUL NEUKIRCH 544 COLUMBIA DR. LAWRENCE, KS 66049 785-330-7044	ELECTRICAL ENGINEER BARTLETT & WEST MIKE VAN DUYN 3456 EAST CENTURY AVE BISMARCK, ND 58503 701-258-1110
STRUCTURAL ENGINEER CW STRUCTURAL ENGINEERS CHRIS WENTZ 1000 E CALGARY AVENUE #2 BISMARCK, ND 58503 701-221-3286	APEX ENGINEERING GROUP JOHN KLEIN 600 SOUTH 2ND STREET BISMARCK, ND 58504 701-323-3950



PROJECT
Classroom Addition

CLIENT
Shiloh Christian School

PROJECT MANAGER

JOSEPH P. LARRIVEE
PROJECT ENGINEER
JOSEPH P. LARRIVEE
R.A. # 1268

DESIGN NUMBER
21210.000

CONST. NUMBER

SHEET NUMBER
1

OF SHEETS
1

Bartlett & West

3456 East Century Avenue
Bismarck ND, 58503
Phone: (701) 258-1110
Fax: (701) 258-1111
WWW.BARTWEST.COM

Bartlett & West

www.bartwest.com

PRELIMINARY

Phase 1B: Performing Arts Center

Cost: TBD



Possible Additional Classrooms

Cost: TBD



Phase 1A: Classroom Expansion

Estimated Cost: \$5-\$6M

8 additional classrooms, 2 stories



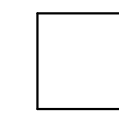
Phase 2: Gymnasium

Cost: TBD

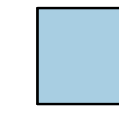


PHASING PLAN LEGEND

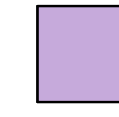
SYMBOL DESCRIPTION



EXISTING CONSTRUCTION



PHASE 1A



PHASE 1A - ADDITION



PHASE 1B



PHASE 2

Bartlett & West
 3458 E CENTURY AVENUE - BISMARCK, ND 58503
 PHONE 701-258-1110 · FAX 701-258-1111
 www.bartlettwest.com

BUILDING PHASING PLAN

Shiloh Christian School
 Classroom Addition
 1915 Shiloh Dr, Bismarck, ND 58503

PRELIMINARY

DESIGNED BY:	JPL
DRAWN BY:	JBN
APPROVED BY:	JPL
DESIGN PROJ:	21210.000
CONST PROJ:	--
SCALE:	AS NOTED
DATE:	01/29/2024
DRAWING NO:	G-101